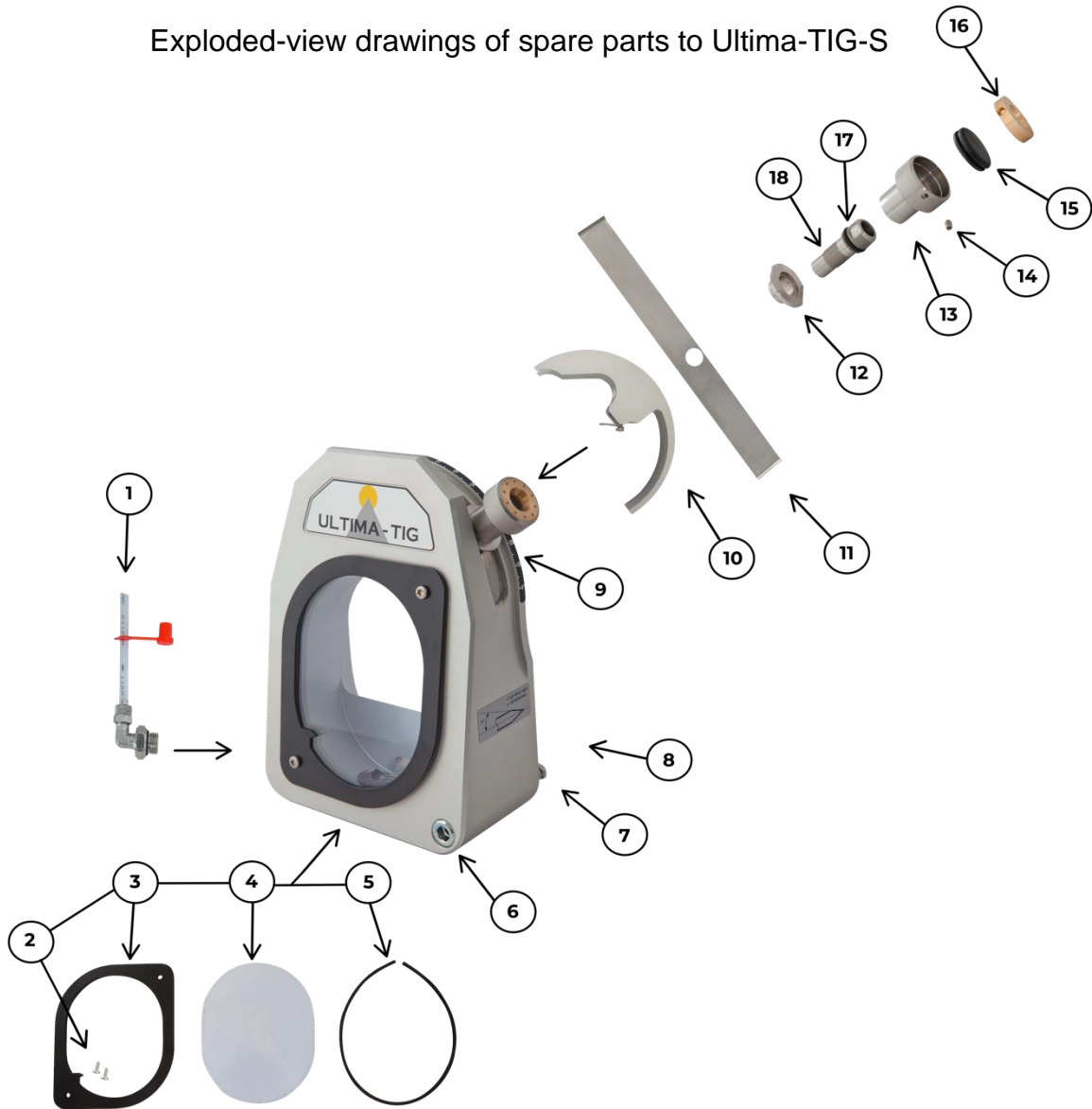
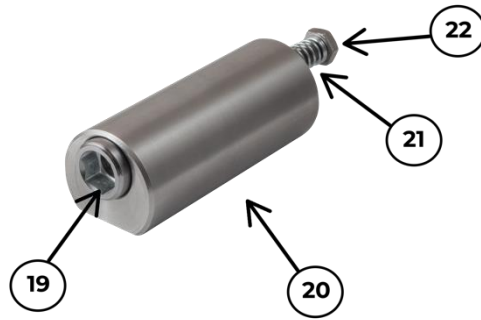


Exploded-view drawings of spare parts to Ultima-TIG-S



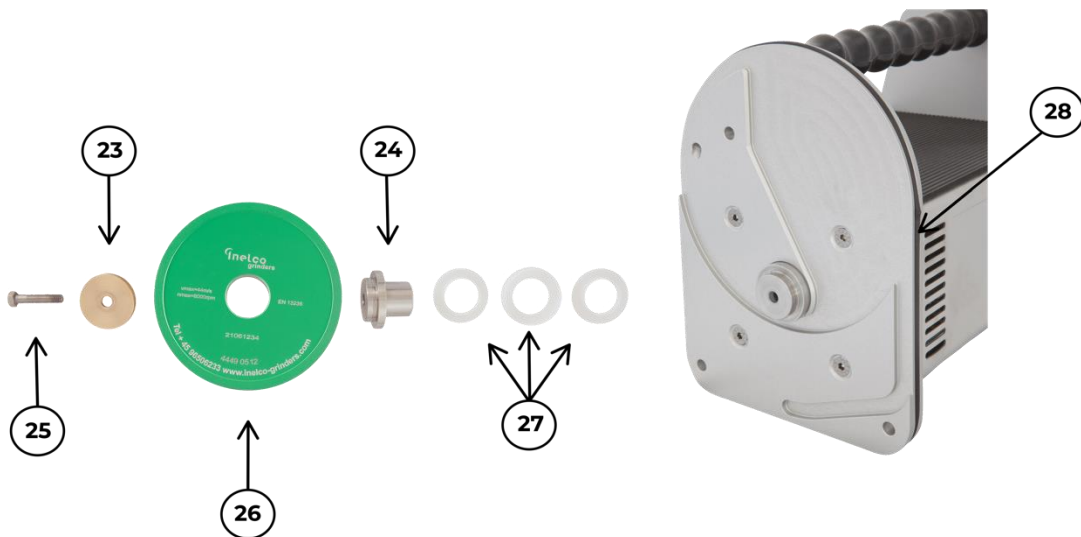
Grinding console

Pos.	Item No.	Description
1	75522500	Drain/filling pipe
2	40320410	Retaining screw M4x10
3	44490901	Frame
4	44490700	Plastic Inspection Cover
5	44520009	Packing ring f. insp. cover
6	44520024	Screw f. stick-out
7	44520028	Spring f. stick-out
8	40040670	Screw M6x70
9	62189220	Degree scale
10	75521001	Angle adjust unit 4,8 mm
11	44520007	Metal strip
12	44521008	Degree scale bush 4,8 mm
13	44521004	Tightening screw 4,8 mm
14	40310404	Pointed screw M4x6
15	44470124	Rubber pack Ø25mm
16	44521027	Bronze bearing Outward 4,8 mm
17	44470312	O-ring Ø12x2
18	44521022	Stretching screw 4,8 mm



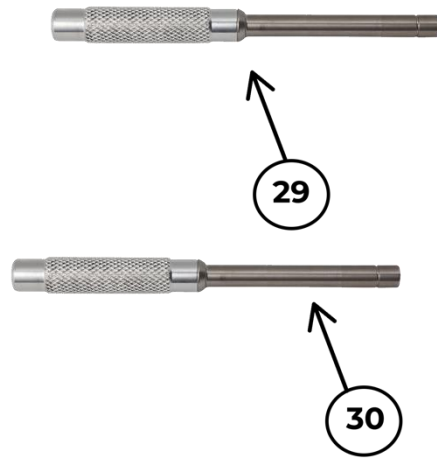
Stick-Out

Pos.	Item No.	Description
19	44520025	Bolt for Stickout 4,8 mm
20	44521030	House for stickout 4,8 mm
21	44520028	Spring f. stick-out
22	40040670	Screw M6x70



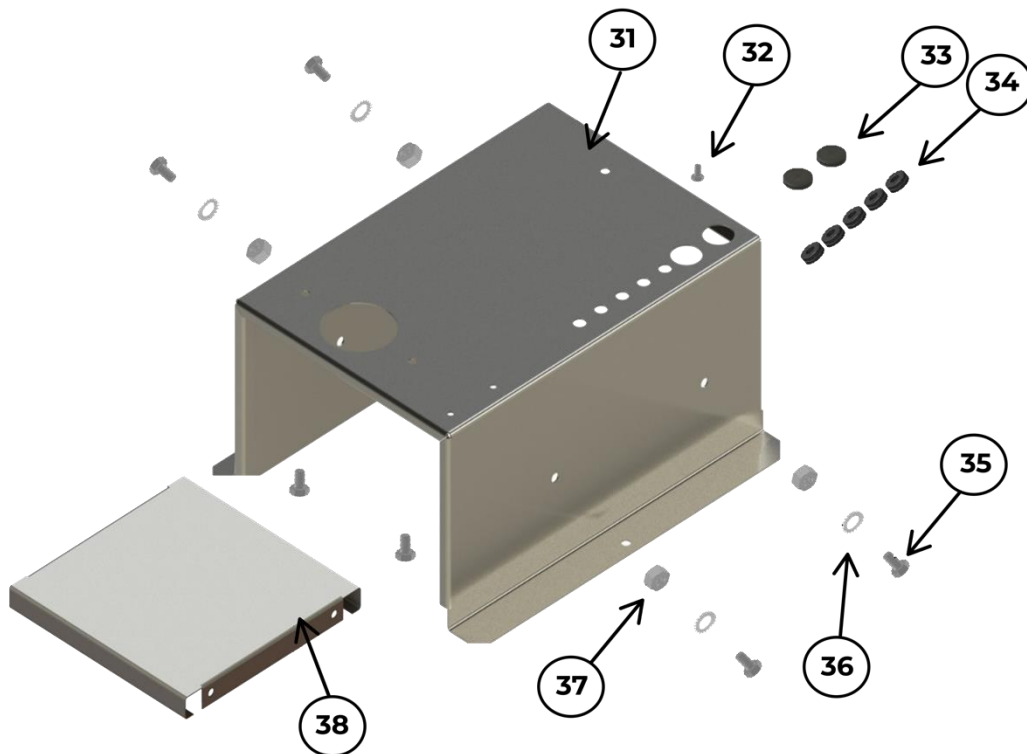
Grinding disc with accessories

Pos.	Item No.	Description
23	41530530	U-wheel UT Ms Ø5X30
24	44520017	Bush f. wheel
25	44496525	Screw M5X25mm left-hand
26	44490512	Diamond disc
27	44520018	Weather ring f. bush (set)
28	44520010	Packing ring f. rear plate



Electrode holder

Pos.	Item No.	Description
29	75521023	Electrode holder for Ø4,8-8,0 mm
30	75520123	Electrode holder for Ø0,8-4,0 mm



Work table

Pos.	Item No.	pcs.	Description
31	44529011	1	Desk Console
32	40110406	3	Bolt M4x6
33	44470124	2	Membrane
34	44470029	5	Gum lead-in ring
35	40040610	6	Bolt M6x10
36	41711106	6	Tooth lock washer Ø6
37	41110605	4	M6 Steel Nut
38	44529002	1	Stiffening plate



Pos.	Item No.	Pcs.	Description
39	75494500	1	Dust Collector incl. liquid (UT + W95/1-45)
40	75491200	1	Grinding liquid 250 ml W95/1-12

| info@inelco-grinders.com | www.inelco-grinders.com | Denmark |