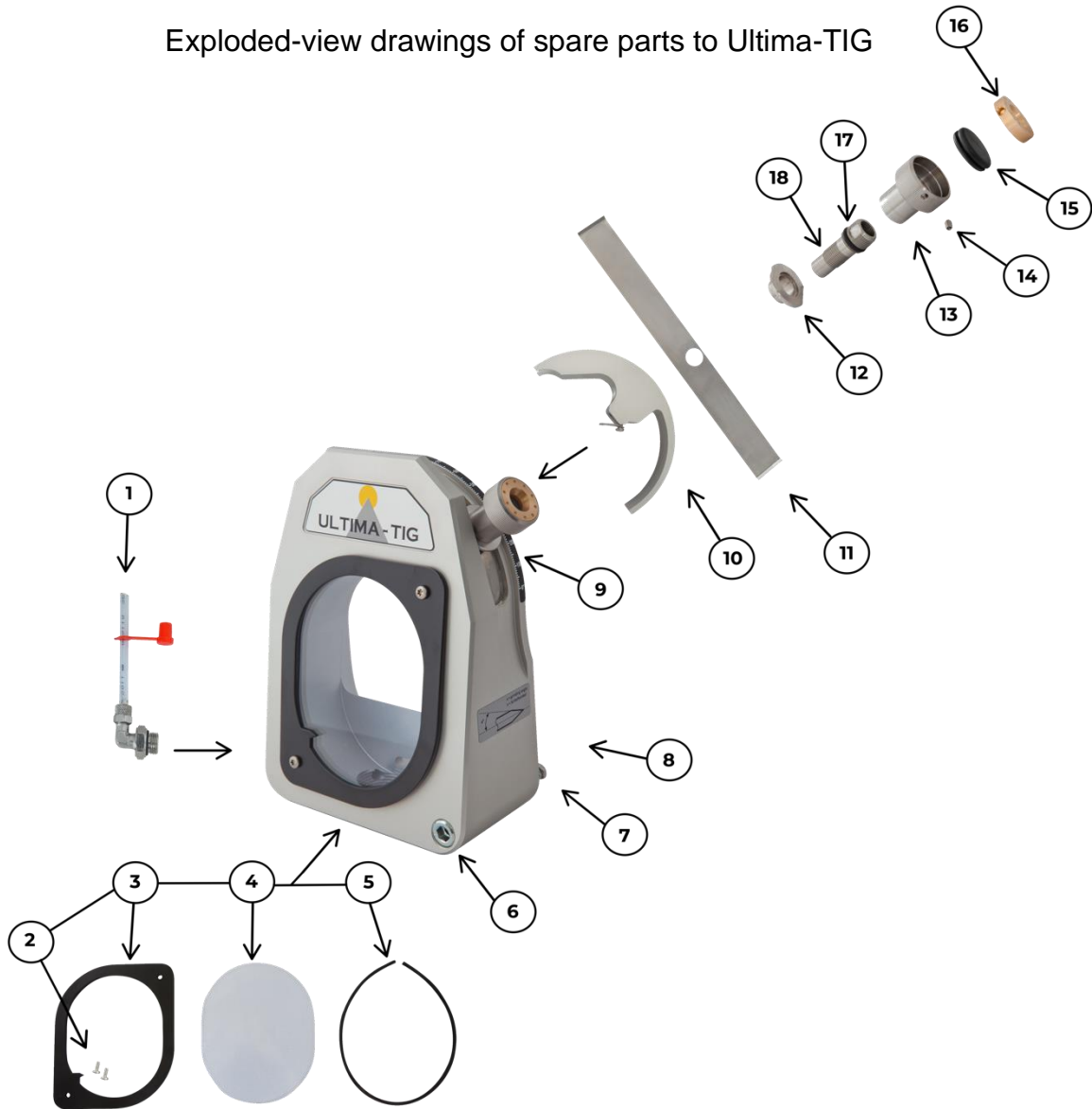
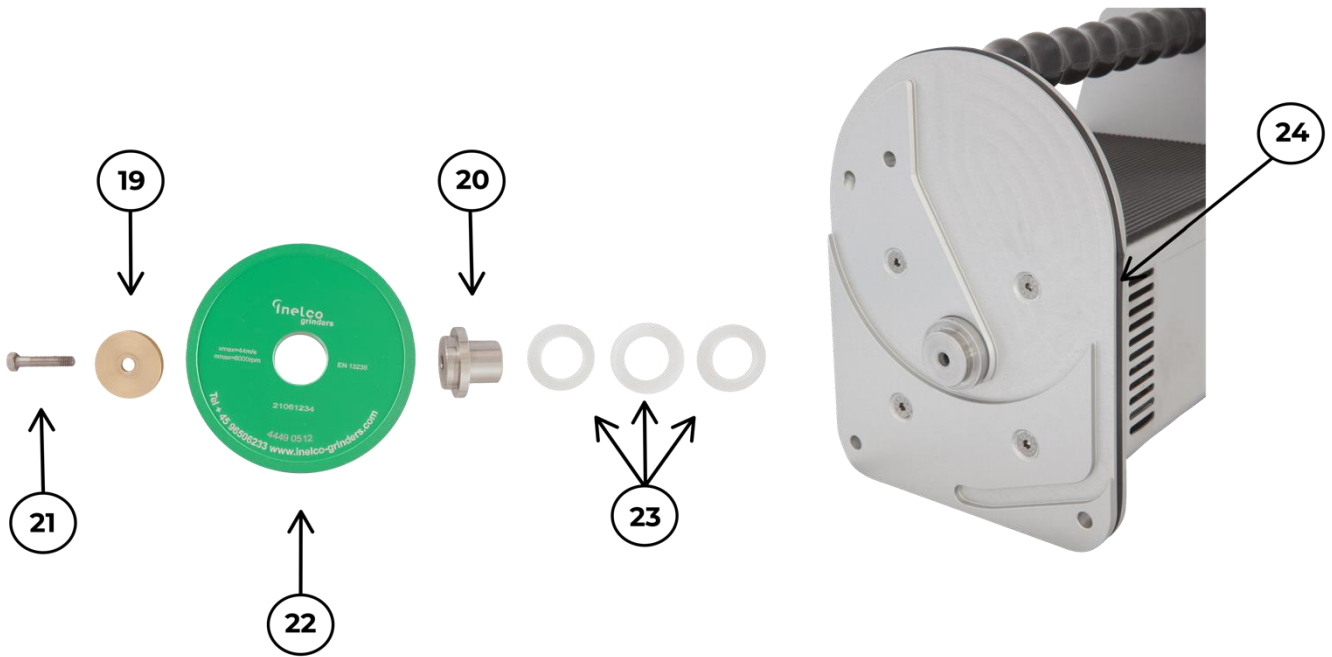


Exploded-view drawings of spare parts to Ultima-TIG



Grinding console

Pos.	Item No.	Description
1	75522500	Drain/filling pipe
2	40320410	Retaining screw Torx M4x10
3	44490901	Frame
4	44490700	Plastic Inspection Cover
5	44520009	Packing ring f. insp. cover
6	44520024	Screw f. stick-out
7	44520028	Spring f. stick-out
8	40040670	Screw M6x70
9	62189220	Degree scale
10	75520001	Angle adjust unit
11	44520007	Metal strip
12	44520008	Degree scale bush
13	44520004	Tightening screw
14	40310404	Pointed screw M4x6
15	44470124	Rubber pack Ø25mm
16	44520027	Bronze bearing Outward
17	44470312	O-ring Ø12x2
18	44520022	Stretching screw



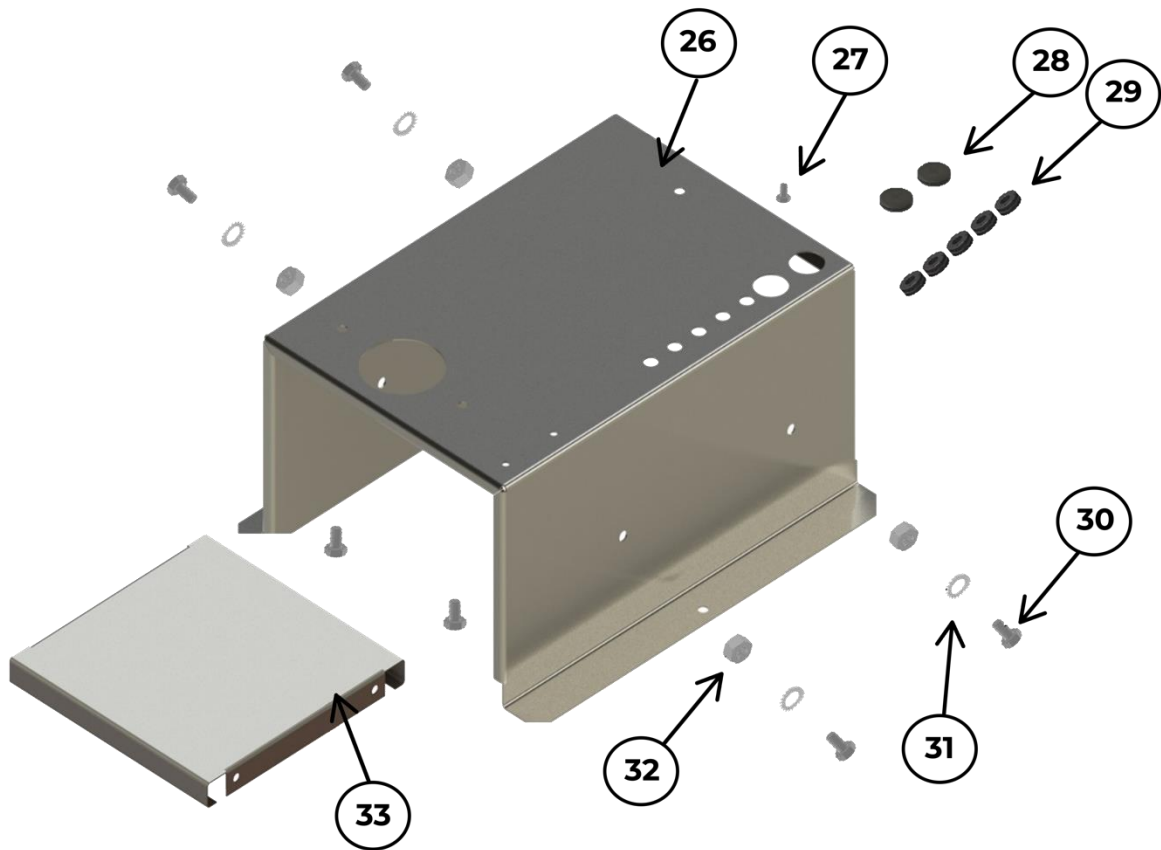
Grinding disc with accessories

Pos.	Item No.	Description
19	41530530	U-wheel UT Ms Ø5X30
20	44520017	Bush f. wheel
21	44496525	Screw M5X25mm left-hand
22	44490512	Diamond disc
23	44520018	Weather ring f. bush (set)
24	44520010	Packing ring f. rear plate



Electrode holder

Pos.	Item No.	Description
25	75520023	Electrode holder



Work table

Pos.	Item no.	Pcs.	Description
26	44529011	1	Desk Console
27	40110406	1	Bolt M4x6
28	44470124	2	Rubber pack (Membrane) Ø25mm
29	44470029	5	Gum lead-in ring Ø9mm
30	40040610	6	Bolt M6x10
31	41711106	6	Tooth lock washer Ø6
32	41110605	4	M6 Steel Nut
33	44529002	1	Stiffening plate



Pos.	Item No.	Pcs.	Description
34	75494500	1	Dust Collector incl. liquid (UT + W95/1-45)
35	75491200	1	Grinding liquid 250 ml W95/1-12

| info@inelco-grinders.com | www.inelco-grinders.com | Denmark |